

# INSTALLATION INSTRUCTIONS

## FREEZE-STAT KIT

### 7½, 8½, 10 AND 12½ TON ROOFTOP AND PACKAGED A/C AND 7½ - 10 TON HEAT PUMP

 Recognize this symbol as an indication of Important Safety Information!

#### WARNING

THESE INSTRUCTIONS ARE INTENDED AS AN AID TO QUALIFIED SERVICE PERSONNEL FOR PROPER INSTALLATION, ADJUSTMENT, AND OPERATION OF THIS KIT. READ THESE INSTRUCTIONS THOROUGHLY BEFORE ATTEMPTING INSTALLATION, ADJUSTMENT, OR OPERATION. FAILURE TO FOLLOW THESE INSTRUCTIONS CAN RESULT IN IMPROPER INSTALLATION, ADJUSTMENT, SERVICE OR MAINTENANCE, POSSIBLY RESULTING IN FIRE, ELECTRICAL SHOCK, PROPERTY DAMAGE, PERSONAL INJURY, OR DEATH.

#### WARNING

BEFORE BEGINNING ANY MODIFICATION, BE SURE MAIN DISCONNECT SWITCH IS IN THE "OFF" POSITION. FAILURE TO DO SO CAN CAUSE ELECTRICAL SHOCK RESULTING IN PROPERTY DAMAGE, PERSONAL INJURY OR DEATH. TAG DISCONNECT WITH A SUITABLE WARNING LABEL.

## 1. INSTALLATION PROCEDURE

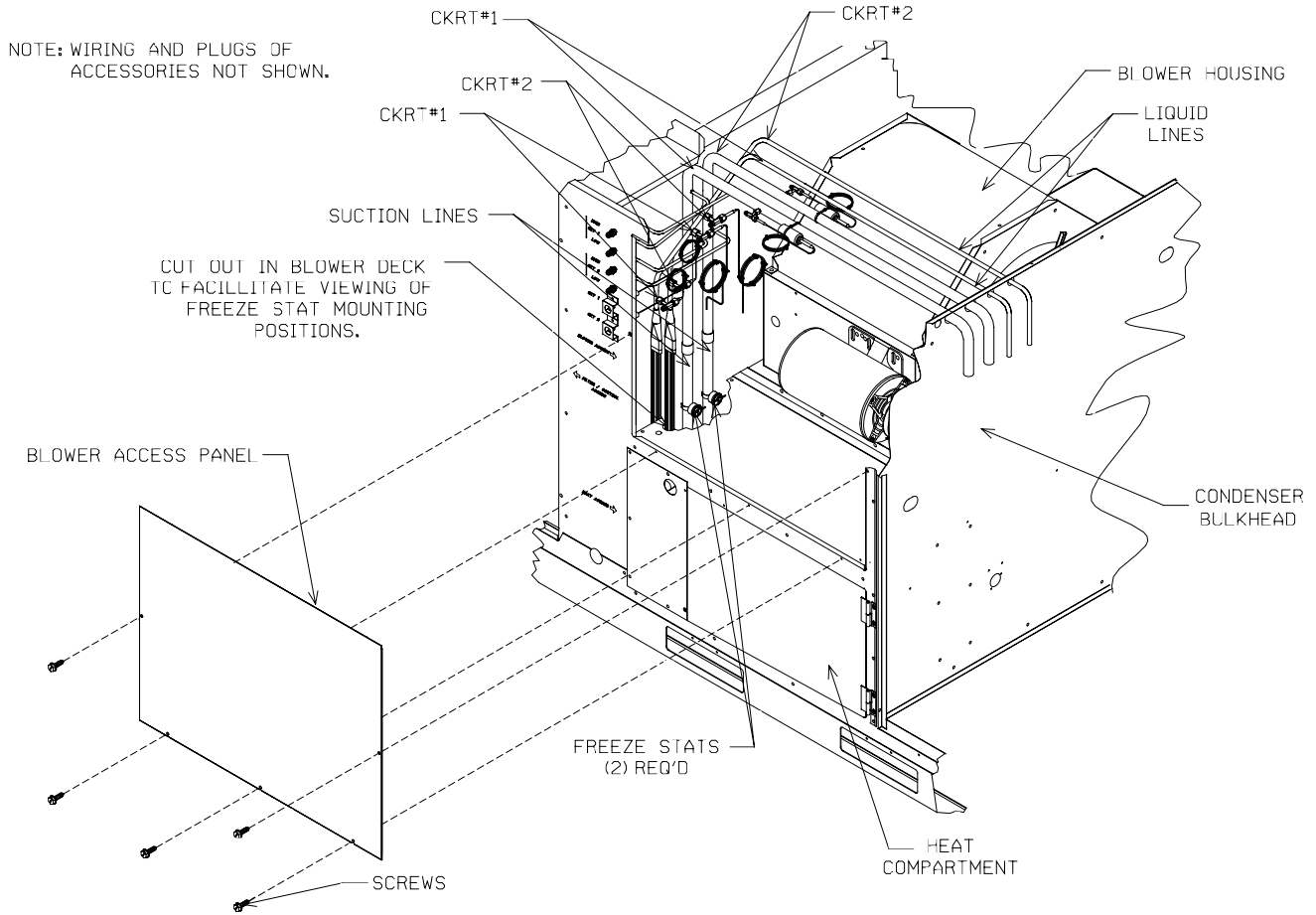
**IMPORTANT:** When snapping the Freeze-Stat (FT) onto the suction line, be careful not to damage any capillary tube in the compartment.

- A. Remove blower access panel and place aside for working space.
- B. Refer to Figure 1A (Rooftop & Package A/C) and 1B (Heat Pump) for location of the FT.
  1. Mount the FT on the suction line located in the blower compartment.
  2. To ensure sensing of the low side temperature, tightly fasten the FT to the suction line.

**Note:** If the FT is not clamped on the suction line correctly, the FT will not shut the system off in the event of the evaporator freeze up.

## 2. ELECTRICAL CONNECTIONS

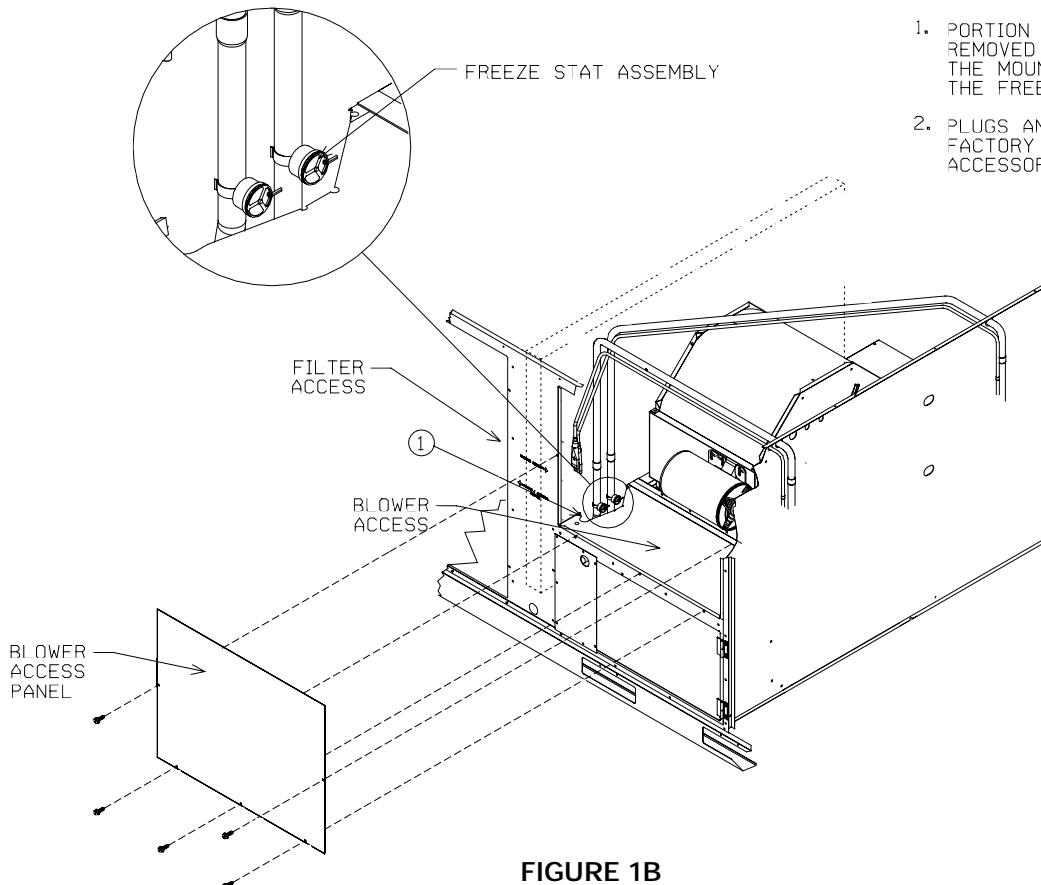
- A. Refer to the wiring diagram in Figure 2A (Rooftop & Packaged A/C) and 2B (Heat Pump) for proper connections.
- B. For Rooftop & Packaged A/C only.
  1. Remove, then discard PL12 and PL15 polarized quick connect plugs (the wire bundle located to the left of the blower compartment) located in the blower compartment.
  2. Insert the male polarized quick connect plug (FT1) and PL14 (CKT #1).
  3. Insert the male polarized quick connect plug (FT2) into PL13 (CKT #2).
- C. If the LPC and HPC is already installed to the unit.
  1. Remove, then discard male polarized jumper quick connect plug from CKT #1 (LPC1 & HPC1) and CKT #2 (LPC2 & HPC2).
  2. Insert the male polarized quick connect plug (FT1) into the female CKT #1 (LPC1 & HPC1).
  3. Insert the male polarized quick connect plug (FT2) into the female CKT #2 (LPC2 & HPC2).
- D. For the Heat Pump, please refer to the optional wiring diagram.



**FIGURE 1A**

NOTES:

1. PORTION OF BLOWER DECK IS REMOVED TO AID IN VIEWING THE MOUNTING POSITION OF THE FREEZE STATS.
2. PLUGS AND WIRES OF THE FACTORY INSTALLED ACCESSORIES NOT SHOWN.



**FIGURE 1B**

E. Ensure that all connections are securely fastened by pulling the polarized quick connect plugs after the male and female components are inserted together with a minimum of torque (for both options).

F. Secure loose wires with wire ties.

G. Restore power after checking all connections.

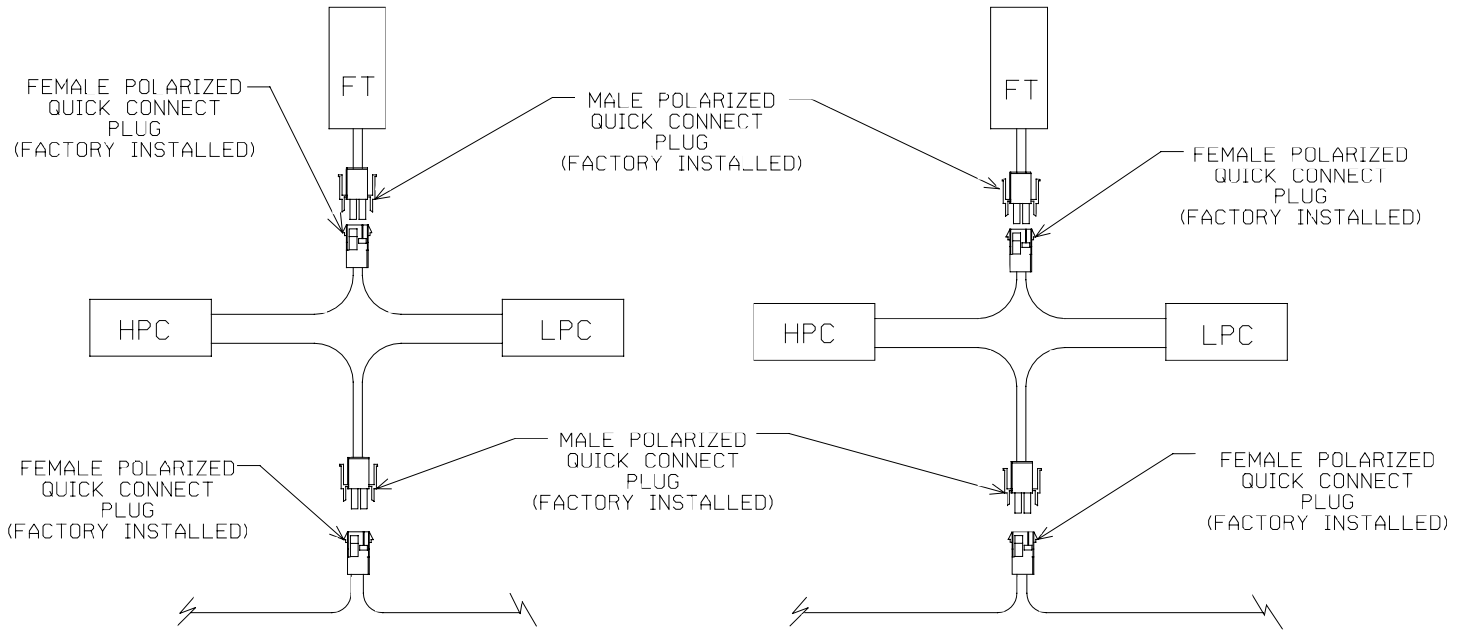


FIGURE 2A

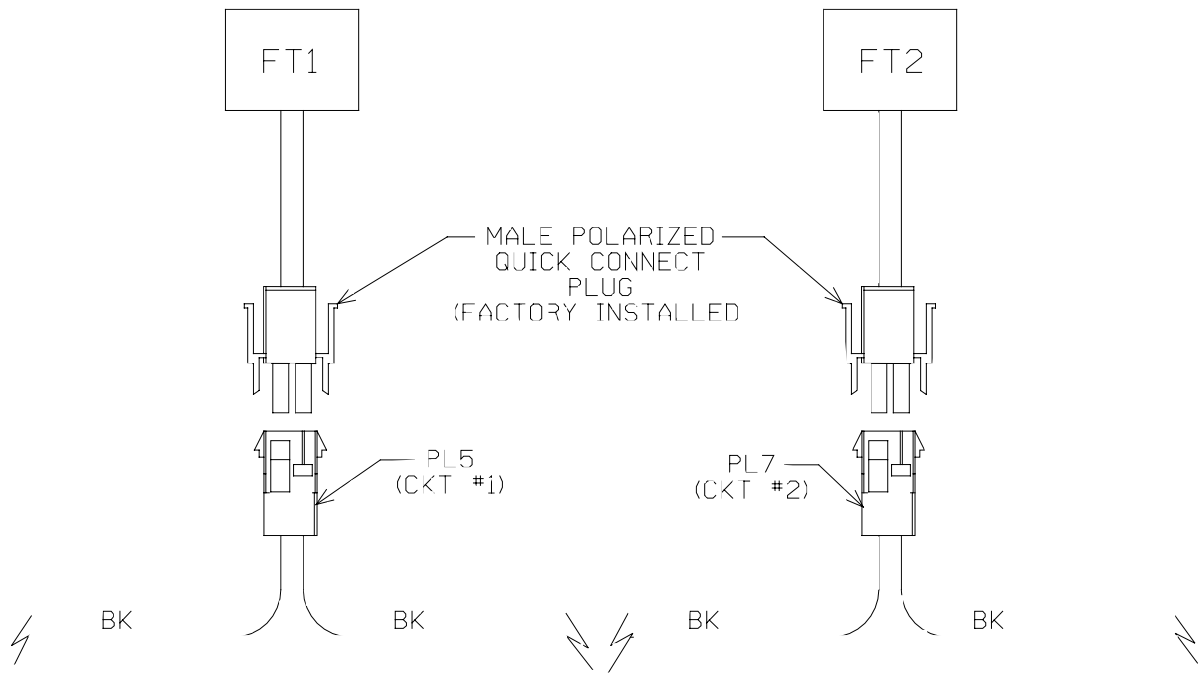
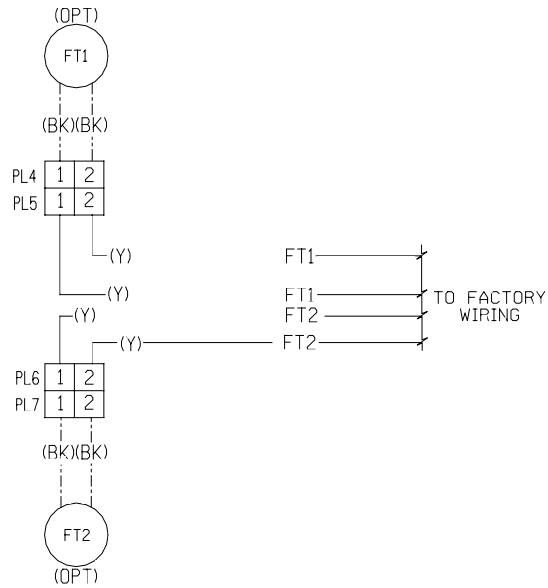
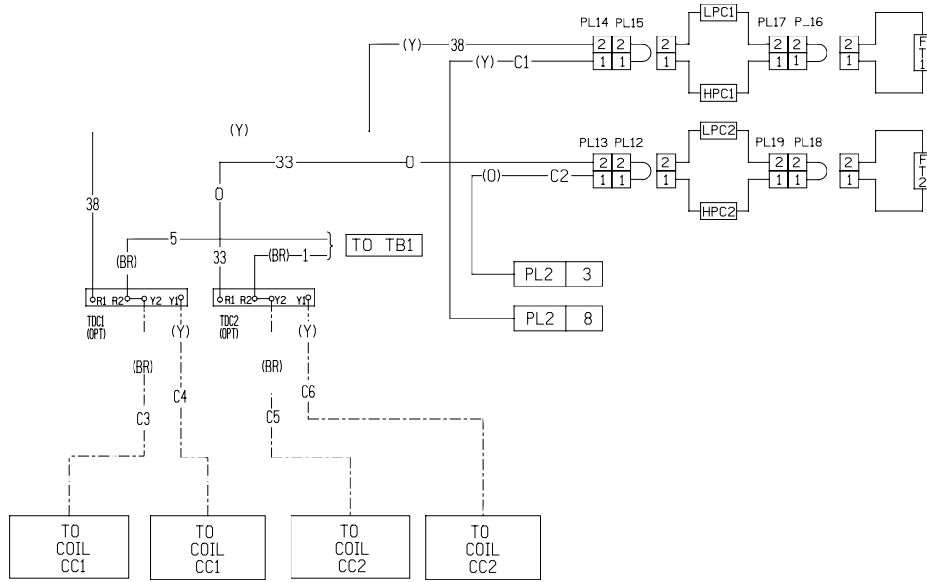


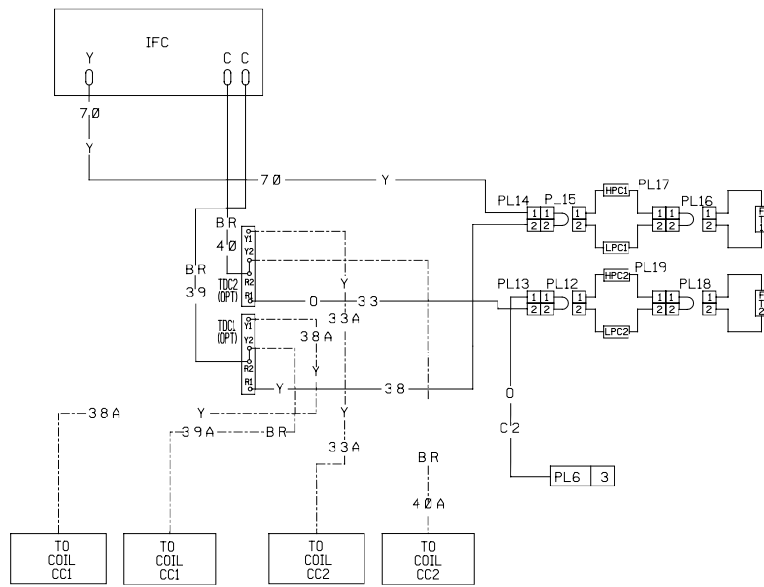
FIGURE 2B



**OPTIONAL WIRING DIAGRAM FOR HEAT PUMP**



**OPTIONAL WIRING DIAGRAM FOR PACKAGE A/C**



**OPTIONAL WIRING DIAGRAM FOR ROOFTOP**