

INDOOR COILS



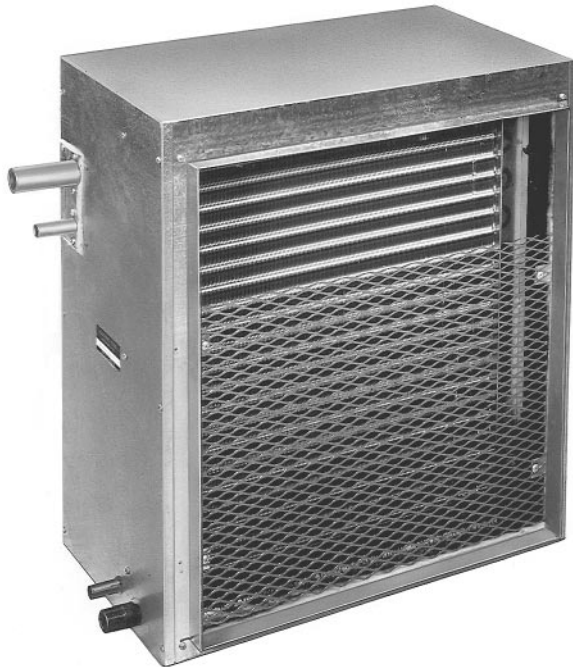
INDOOR COILS

Airflow Capacities
400 to 2,250 CFM
[188.8 to 1061.9 L/s]

Rheem® Indoor Coils are designed for use with Rheem outdoor units and are available for vertical or horizontal airflow. When matched with Rheem outdoor units, the coils provide a capacity range from 12,000 BTU/HR [3.52 kW] to 60,000 BTU/HR [17.6 kW].

- Constructed of aluminum fins bonded to copper tubing.
- Coils are tested at the factory with an extensive refrigerant leak check for improved quality control.
- Coils have sweat fitting refrigerant connections.
- Ideally suited for new installations or add on air conditioning.
- Condensate drain connections are 3/4" [19.1 mm] N.P.T. for ease of connection.
- Coils are A.R.I. certified for system application with a wide variety of Rheem outdoor units.
- Horizontal coils have insulated housing with convenient duct flanges for ease of installation.

For upflow or downflow applications, matching plenums designed for use with the series cooling coils are available to complete the installation. Plenums are described on Rheem form X11-1101 for use with Rheem upflow or downflow furnaces.



Indoor Coil Data

Coil Model Number	Type ③ Air Flow ①	Approx. Design Air-Flow CFM [L/s] Range	Face Area Sq. Ft. [m²]	Fins-in. Rows Deep	Tubing Set Size RTCZ-	Ship-ping Wt., lbs. [kg]	Static Pressure Drop Through Wet Cooling Coil [kPa] (Inches H ₂ O) CFM [L/s] ①															
							600 [285]	700 [330]	800 [380]	900 [425]	1000 [470]	1100 [519]	1200 [565]	1300 [614]	1400 [660]	1500 [708]	1600 [755]	1700 [802]	1800 [850]	1900 [897]	2000 [945]	2100 [991]
STANDARD COOLING COILS																						
RCAS-A013	U-D-H④	400/600	[188.8/283.1]	1.36 [0.13]	12/3	10/11	15 [6.8]	.18 [.045] @ 400 CFM [188.8 L/s]—.26 @ 500 CFM [236 L/s]														
RCAS-A018	U-D-H④	600/700	[283.1/330.4]	1.58 [0.15]	10/4	10/11	16 [7.3]	.25 [.062]	.32 [.080]													
RCAB-A021	U-D-H④	600/700	[283.1/330.4]	2.71 [0.25]	12/3	10/11	21 [9.5]	.11 [.027]	.14 [.035]													
RCAB-A025	U-D-H④	900/1050	[424.8/495.5]	2.71 [0.25]	12/3	10/11	21 [9.5]	.11 [.027]	.14 [.035]	.18 [.045]	.22 [.055]	.26 [.065]	.31 [.077]									
RCAB-A031	U-D-H④	900/1350	[424.8/637.1]	3.80 [0.35]	13/3	11	27 [12.2]				.16 [.040]	.19 [.047]	.22 [.055]	.25 [.062]	.30 [.075]	.33 [.082]						
RCAB-A037	U-D-H④	900/1350	[424.8/637.1]	3.80 [0.35]	13/3	11	27 [12.2]				.16 [.040]	.19 [.047]	.22 [.055]	.25 [.062]	.30 [.075]	.33 [.082]						
RCAB-A049	U-D-H④	1500/1800	[707.9/849.5]	4.56 [0.42]	13/3	11 or 12	34 [15.4]							.19 [.047]	.21 [.052]	.24 [.060]	.26 [.065]	.29 [.072]	.33 [.082]			
RCAB-A059	U-H	1800/2250	[849.5/1061.9]	5.41 [0.50]	13/3	12	37 [16.8]										.21 [.052]	.23 [.057]	.25 [.062]	.28 [.070]	.31 [.077]	
RCEB-A059	U-H④	1800/2250	[849.5/1061.9]	5.41 [0.50]	13/3	12	38 [17.2]										.21 [.052]	.23 [.057]	.25 [.062]	.28 [.070]	.31 [.077]	
HIGH EFFICIENCY COOLING COILS																						
RCLB-A024	U-D-H②	500/800	[236/377.6]	3.16 [0.29]	13/4	11	28 [12.7]	.13 [.032]	.16 [.040]	.20 [.050]	.24 [.060]	.28 [.070]	.33 [.082]									
RCLB-A030	U-D-H②	800/1200	[377.6/566.3]	3.80 [0.35]	13/4	11	32 [14.5]			.16 [.040]	.19 [.047]	.22 [.055]	.26 [.065]	.30 [.075]	.34 [.085]							
RCLB-A036	U-D-H②	800/1200	[377.6/566.3]	3.80 [0.35]	13/4	11 or 12	32 [14.5]			.16 [.040]	.19 [.047]	.22 [.055]	.26 [.065]	.30 [.075]	.34 [.085]							
RCLB-A048	U-D-H②	1200/1600	[566.3/755.1]	4.56 [0.42]	13/4	11 or 12	37 [16.8]							.18 [.045]	.21 [.052]	.24 [.060]	.27 [.067]	.30 [.075]	.33 [.082]			
RCLB-B048	U-D	1400/2000	[660.7/943.9]	5.13 [0.48]	13/4	12	43 [19.5]									.21 [.052]	.23 [.057]	.25 [.062]	.28 [.070]	.30 [.075]	.33 [.082]	
RCMB-A048	U-D-H②	1400/2000	[660.7/943.9]	5.13 [0.48]	13/4	12	44 [20]									.21 [.052]	.23 [.057]	.25 [.062]	.28 [.070]	.30 [.075]	.33 [.082]	
RCLB-A060	U-D	1400/2000	[660.7/943.9]	5.13 [0.48]	13/4	12	43 [19.5]									.21 [.052]	.23 [.057]	.25 [.062]	.28 [.070]	.30 [.075]	.33 [.082]	
RCMB-A060	U-D-H②	1400/2000	[660.7/943.9]	5.13 [0.48]	13/4	12	44 [20]									.21 [.052]	.23 [.057]	.25 [.062]	.28 [.070]	.30 [.075]	.33 [.082]	
HIGH EFFICIENCY COOLING COILS WITH EXPANSION VALVE																						
Evaporator coils are equipped with a non-bleed type expansion valve and must be used with condensing units equipped with hard start components.																						
RCTB-A018	U-D-H②	500/600	[236/283.1]	2.71 [0.25]	12/3	10/11	22 [10]	.07 [.017] @ 500 CFM [236 L/s]—.11 [.027] @ 600 CFM [283 L/s]														
RCTB-A024	U-D-H②	500/800	[236/377.6]	3.16 [0.29]	13/4	11	34 [15.4]	.13 [.032]	.16 [.040]	.20 [.050]	.24 [.060]	.28 [.070]	.33 [.082]									
RCTB-A025	U-D-H②	500/800	[236/377.6]	3.80 [0.35]	13/4	11	42 [19.1]	.09 [.022]	.13 [.032]	.16 [.040]	.19 [.047]	.22 [.055]	.26 [.065]									
RCTB-A036	U-D-H②	800/1200	[377.6/566.3]	3.80 [0.35]	13/4	11 or 12	42 [19.1]			.16 [.040]	.19 [.047]	.22 [.055]	.26 [.065]	.30 [.075]	.34 [.085]							
RCTB-A037	U-D-H②	800/1200	[377.6/566.3]	4.56 [0.42]	13/4	11 or 12	42 [19.1]			.06 [.015]	.09 [.022]	.12 [.030]	.15 [.037]	.18 [.045]	.21 [.052]							
RCTB-A048	U-D-H②	1200/1600	[566.3/755.1]	4.56 [0.42]	13/4	11 or 12	44 [20]							.18 [.045]	.21 [.052]	.24 [.060]	.27 [.067]	.30 [.075]	.33 [.082]			
RCTB-A060	U-D	1400/2000	[660.7/943.9]	5.13 [0.48]	13/4	12	46 [20.9]									.21 [.052]	.23 [.057]	.25 [.062]	.28 [.070]	.30 [.075]	.33 [.082]	
RCTB-B060	U-D-H②	1400/2000	[660.7/943.9]	5.13 [0.48]	13/4	12	46 [20.9]									.21 [.052]	.23 [.057]	.25 [.062]	.28 [.070]	.30 [.075]	.33 [.082]	
HIGH EFFICIENCY HEAT PUMP COILS WITH EXPANSION VALVE																						
Indoor coils are equipped with a non-bleed type expansion valve and must be used with heat pump units equipped with hard start components.																						
↙Indoor coils for use with RPGB-/RPMA- outdoor units only.																						
RCQB-B018	U-D-H	500/700	[236/330.4]	3.16 [0.29]	13/3		23 [10.4]		.14 [.035]	.18 [.045]	.22 [.055]	.26 [.065]										
RCQB-B024	U-D-H	700/900	[330.4/424.8]	3.16 [0.29]	13/4		27 [12.2]		.16 [.040]	.20 [.050]	.24 [.060]	.28 [.070]										
RCQB-B030	U-D-H	900/1100	[424.8/519.1]	3.80 [0.35]	13/4		35 [15.9]⑤				.19 [.047]	.22 [.055]	.26 [.065]									
RCQB-B036	U-D-H	1100/1250	[519.1/590]	3.80 [0.35]	13/4		36 [16.3]⑤						.26 [.065]	.30 [.075]	.34 [.085]							
RCQB-B042	U-D-H	1300/1500	[613.5/707.9]	5.69 [0.53]	13/4		53 [24]⑤								.17 [.042]	.18 [.045]	.19 [.047]					
RCQB-B048	U-D-H	1500/1800	[707.9/849.5]	6.83 [0.63]	13/4		66 [29.9]⑤									.15 [.037]	.17 [.042]	.19 [.047]	.21 [.052]			
RCQB-B060	U-D-H	1800/2100	[849.5/991.1]	6.83 [0.63]	13/4		68 [30.8]⑤												.21 [.052]	.23 [.057]	.26 [.065]	
																			.29 [.072]			

① Data given for upflow application. For downflow multiply figures by 1.10. ② May be used in horizontal position in RHQA- or REAB- series electric units with addition of horizontal drain pan kit (optional).
③ U = upflow, D = downflow and H = horizontal. ④ For horizontal installation in RHQA- air handlers **only**. Requires horizontal drain pan kit. ⑤ Coil weight only.

Coil Application

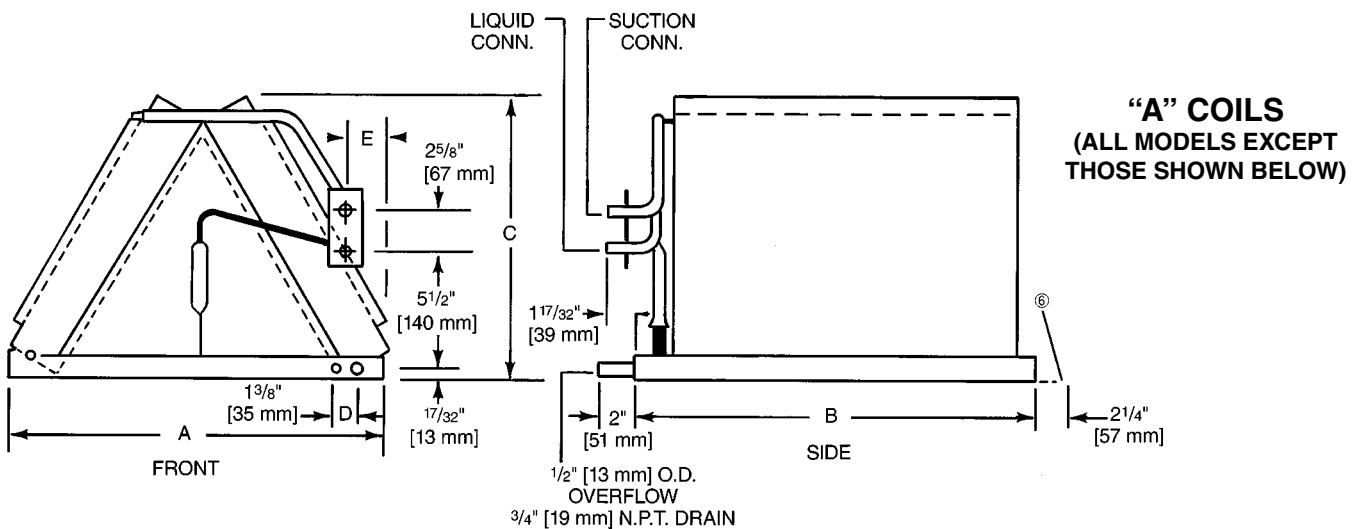
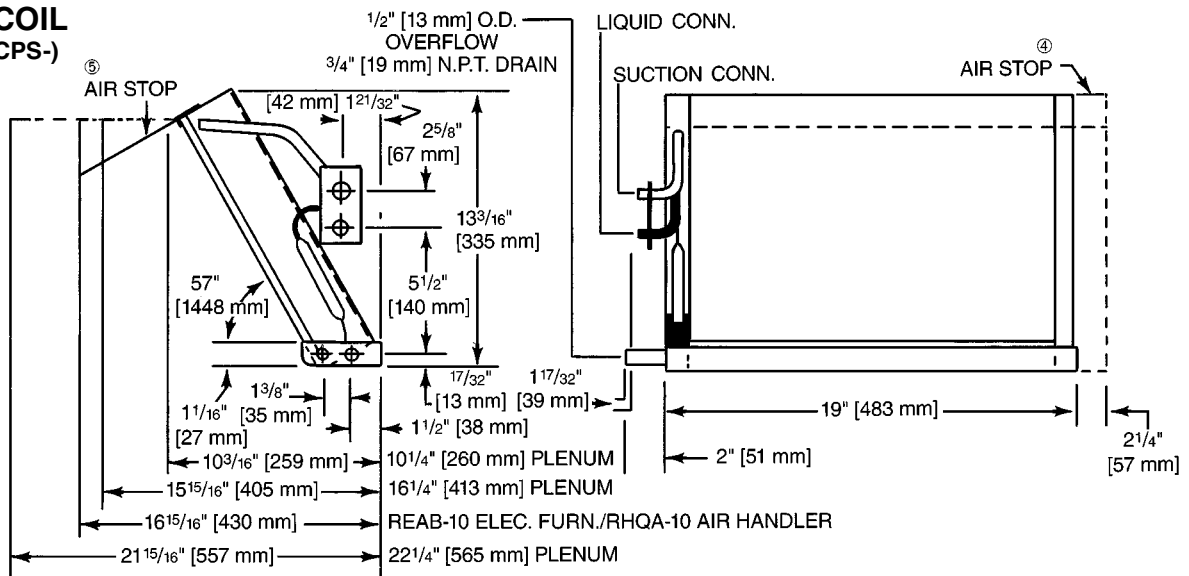
Coil can be matched to products as listed in table below. Horizontal drain pan kits can be installed on coils shown for RHQA- series indoor heat pump section for horizontal applications. Horizontal kits cannot be installed on coils for use in upflow-downflow coil plenums.

COIL MODEL NUMBER	REAB- SERIES ELEC. FURNACE SIZES (In.) [mm]				RHQA- SERIES INDOOR AIR HANDLER SIZES (In.) [mm]						UPFLOW-DOWNFLOW COIL PLENUM RXAL-B(*)BU						HORIZONTAL DRAIN PAN KIT RXCH-			
	10 [254]	14 [355.6]	16 [406.4]	20 [508]	08 [203.2]	10 [254]	12 [304.8]	13 [330.2]	16 [406.4]	20 [508]	*11	*16	*20	*22	*25	*28	A10	A14	A16	B16
STANDARD COOLING COILS (NOTE APPLICATION DIFFERENCES OF 059 COILS)																				
RCAS-A013	X				⑤						X	X		X			⑦			
RCAS-A018	X				⑤						X	X		X			⑦			
RCAB-A021	X				⑤							X	X	X	X		⑦			
RCAB-A025	X				⑤							X	X	X	X		⑦			
RCAB-A031		X					⑤					X	X	X	X		⑦			
RCAB-A037		X					⑤					X	X	X	X		⑦			
RCAB-A049			X						① ⑤				X	X	X	X				⑦
RCAB-A059															④	④				
RCEB-A059				④						④ ⑤										⑦
HIGH EFFICIENCY COOLING COILS (NOTE APPLICATION DIFFERENCES OF 060 COILS)																				
RCLB-A024	②				⑤ ⑧							X	X	X	X		⑨			
RCLB-A030		X					⑤					X	X	X	X		⑨			
RCLB-A036		X					⑤					X	X	X	X		⑨			
RCLB-A048			X						① ⑤				X	X	X	X		⑥ ⑨	⑦	
RCLB-B048															X	X				
RCMB-A048			⑩				⑤											⑥ ⑨	⑦	
RCLB-A060															X	X				
RCMB-A060				X						⑤								⑥ ⑨	⑦	
HIGH EFFICIENCY COOLING COILS WITH EXPANSION VALVE (NOTE APPLICATION DIFFERENCES OF 060 COILS) Evaporator coils are equipped with a non-bleed type expansion valve and must be used with condensing units equipped with hard start components. (RAGB- & RAGC-)																				
RCTB-A018	X				⑤							X	X	X	X	⑧	⑨			
RCTB-A024	②				⑤ ⑧							X	X	X	X	⑧	⑨			
RCTB-A025		X					⑤					X	X	X	X		⑨			
RCTB-A036		X					⑤					X	X	X	X		⑨			
RCTB-A037			X						① ⑤				X	X	X			⑥ ⑨	⑦	
RCTB-A048			X						① ⑤				X	X	X	X		⑥ ⑨	⑦	
RCTB-A060															X	X				
RCTB-B060				X						⑤								⑥ ⑨	⑦	
HIGH EFFICIENCY HEAT PUMP COILS WITH EXPANSION VALVE ③ ⑤ Indoor coils are equipped with a non-bleed type expansion valve and must be used with heat pump units equipped with hard start components. ↓ Indoor coils for use with RPGB-/RPMA- outdoor units only.																				
RCQB-B018					⑤ ⑧							X	X	X	X		X			
RCQB-B024					⑤ ⑧							X	X	X	X		X			
RCQB-B030							⑤					X	X	X	X			X		
RCQB-B036							⑤					X	X	X	X			X		
RCQB-B042								⑤												X
RCQB-B048								⑤												X
RCQB-B060									⑤											X

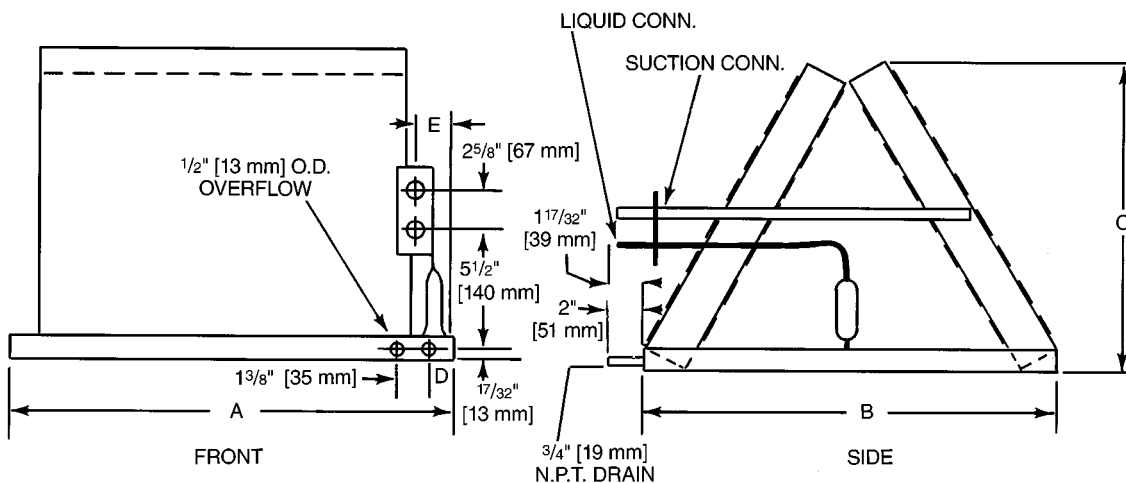
① Can be used but requires field modification or use adapter kit RXCA-B16. ② Coil RCLB-A024 & RCTB-A024 may be used upflow and horizontal (R.H. supply) only in REAB-10 electric furnace. Coil will not fit downflow or horizontal (L.H. supply). Installation requires the removal of supply duct flange from furnace. ③ For fossil fuel applications, always locate coil **downstream** of the furnace heat exchanger. ④ RCAB-/RCEB-A059 should not be used in downflow applications. ⑤ Field installed only. ⑥ For horizontal application in REAB- series electric furnaces. ⑦ For horizontal application in RHQA- air handlers only. ⑧ **Coil will fit in air handler with removal and replacement of internal parts. This requires access to screws on one side of furnace.** ⑨ An optional horizontal drain pan extension kit is available as needed for horizontal applications in REAB- series electric furnaces only. (Ref. page 6.) ⑩ Factory Installed Only.

Dimensions/Coils

SLOPE COIL (RCAS-/RCPS-)



"A" COILS (RCAB-A059, RCLB-B048, RCLB-A060, AND RCTB-A060— NOTE ORIENTATION OF REFRIGERANT AND DRAIN FITTINGS)



Dimensions

COIL MODEL NUMBER	CONNECTIONS		DIMENSIONS (In.) [mm]							
	Sweat ①		A	B	C	D	E	F ③	G ③	
	Liquid	Suction								
	I.D.	I.D.								
STANDARD										
RCAS-A013	1/4 [6.35] ②	5/8 [15.88]	See Line Drawing					—	—	
RCAS-A018	1/4 [6.35] ②	5/8 [15.88]	See Line Drawing					—	—	
RCAB-A021	1/4 [6.35] ②	3/4 [19.05]	15 ¹⁵ / ₁₆ [405]	19 [483]	11 ¹ / ₂ [292]	1 ¹ / ₂ [38]	12 ¹ / ₃₂ [42]	10 ¹ / ₁₆ [256]	15 ³ / ₄ [400]	
RCAB-A025	1/4 [6.35] ②	3/4 [19.05]	15 ¹⁵ / ₁₆ [405]	19 [483]	11 ¹ / ₂ [292]	1 ¹ / ₂ [38]	12 ¹ / ₃₂ [42]	10 ¹ / ₁₆ [256]	15 ³ / ₄ [400]	
RCAB-A031	1/4 [6.35] ②	3/4 [19.05]	15 ¹⁵ / ₁₆ [405]	21 ¹ / ₈ [537]	15 [381]	1 ¹ / ₂ [38]	12 ¹ / ₃₂ [42]	10 ¹ / ₁₆ [256]	17 ⁷ / ₈ [454]	
RCAB-A037	1/4 [6.35] ②	3/4 [19.05]	15 ¹⁵ / ₁₆ [405]	21 ¹ / ₈ [537]	15 [381]	1 ¹ / ₂ [38]	12 ¹ / ₃₂ [42]	10 ¹ / ₁₆ [256]	17 ⁷ / ₈ [454]	
RCAB-A049	3/8 [9.53]	7/8 [22.23]	19 ¹⁵ / ₁₆ [506]	21 ¹ / ₈ [537]	17 ⁷ / ₁₆ [443]	1 ¹ / ₂ [38]	12 ¹ / ₃₂ [42]	14 ¹ / ₁₆ [357]	17 ⁷ / ₈ [454]	
RCAB-A059	3/8 [9.53]	7/8 [22.23]	23 ⁵ / ₈ [600]	21 ⁵ / ₁₆ [541]	17 ⁹ / ₁₆ [446]	1 ³ / ₁₆ [30]	11 ¹ / ₃₂ [34]	20 ³ / ₈ [518]	15 ⁷ / ₁₆ [392]	
RCEB-A059	3/8 [9.53]	7/8 [22.23]	21 ⁵ / ₁₆ [541]	23 ⁵ / ₈ [600]	17 ⁹ / ₁₆ [446]	1 ¹ / ₂ [38]	12 ¹ / ₃₂ [42]	15 ⁷ / ₁₆ [392]	20 ³ / ₈ [518]	
HIGH EFFICIENCY										
RCLB-A024	1/4 [6.35] ②	3/4 [19.05]	15 ¹⁵ / ₁₆ [405]	19 [483]	14 [356]	1 ¹ / ₂ [38]	12 ¹ / ₃₂ [42]	10 ¹ / ₁₆ [256]	15 ³ / ₄ [400]	
RCLB-A030	1/4 [6.35] ②	3/4 [19.05]	15 ¹⁵ / ₁₆ [405]	21 ¹ / ₈ [537]	15 [381]	1 ¹ / ₂ [38]	12 ¹ / ₃₂ [42]	10 ¹ / ₁₆ [256]	17 ⁷ / ₈ [454]	
RCLB-A036	1/4 [6.35] ②	3/4 [19.05]	15 ¹⁵ / ₁₆ [405]	21 ¹ / ₈ [537]	15 [381]	1 ¹ / ₂ [38]	12 ¹ / ₃₂ [42]	10 ¹ / ₁₆ [256]	17 ⁷ / ₈ [454]	
RCLB-A048	3/8 [9.53]	7/8 [22.23]	19 ¹⁵ / ₁₆ [506]	21 ¹ / ₈ [537]	17 ⁷ / ₁₆ [443]	1 ¹ / ₂ [38]	12 ¹ / ₃₂ [42]	14 ¹ / ₁₆ [357]	17 ⁷ / ₈ [454]	
RCLB-B048	3/8 [9.53]	7/8 [22.23]	23 ⁵ / ₈ [600]	21 ⁵ / ₁₆ [541]	17 ¹ / ₈ [435]	1 ³ / ₁₆ [30]	11 ¹ / ₃₂ [34]	20 ³ / ₈ [518]	15 ⁷ / ₁₆ [392]	
RCMB-A048	3/8 [9.53]	7/8 [22.23]	21 ⁵ / ₁₆ [541]	23 ⁵ / ₈ [600]	17 ¹ / ₈ [435]	1 ¹ / ₂ [38]	12 ¹ / ₃₂ [42]	15 ⁷ / ₁₆ [392]	20 ³ / ₈ [518]	
RCLB-A060	3/8 [9.53]	7/8 [22.23]	23 ⁵ / ₈ [600]	21 ⁵ / ₁₆ [541]	17 ¹ / ₈ [435]	1 ¹ / ₂ [38]	11 ¹ / ₃₂ [34]	20 ³ / ₈ [518]	15 ⁷ / ₁₆ [392]	
RCMB-A060	3/8 [9.53]	7/8 [22.23]	21 ⁵ / ₁₆ [541]	23 ⁵ / ₈ [600]	17 ¹ / ₈ [435]	1 ¹ / ₂ [38]	12 ¹ / ₃₂ [42]	15 ⁷ / ₁₆ [392]	20 ³ / ₈ [518]	
HIGH EFFICIENCY WITH EXPANSION VALVE										
Evaporator coils are equipped with a non-bleed type expansion valve and must be used with condensing units equipped with hard start components.										
RCTB-A018	1/4 [6.35]	5/8 [15.88]	15 ¹⁵ / ₁₆ [405]	19 [483]	11 ¹ / ₂ [292]	1 ¹ / ₂ [38]	12 ¹ / ₃₂ [42]	10 ¹ / ₁₆ [256]	15 ³ / ₄ [400]	
RCTB-A024	1/4 [6.35]	3/4 [19.05]	15 ¹⁵ / ₁₆ [405]	19 [483]	14 [356]	1 ¹ / ₂ [38]	12 ¹ / ₃₂ [42]	10 ¹ / ₁₆ [256]	15 ³ / ₄ [400]	
RCTB-A025	1/4 [6.35]	3/4 [19.05]	15 ¹⁵ / ₁₆ [405]	21 ¹ / ₈ [537]	15 [381]	1 ¹ / ₂ [38]	12 ¹ / ₃₂ [42]	10 ¹ / ₁₆ [256]	17 ⁷ / ₈ [454]	
RCTB-A036	1/4 [6.35]	3/4 [19.05]	15 ¹⁵ / ₁₆ [405]	21 ¹ / ₈ [537]	15 [381]	1 ¹ / ₂ [38]	12 ¹ / ₃₂ [42]	10 ¹ / ₁₆ [256]	17 ⁷ / ₈ [454]	
RCTB-A037	3/8 [9.53]	7/8 [22.23]	19 ¹⁵ / ₁₆ [506]	21 ¹ / ₈ [537]	17 ⁷ / ₁₆ [443]	1 ¹ / ₂ [38]	12 ¹ / ₃₂ [42]	14 ¹ / ₁₆ [357]	17 ⁷ / ₈ [454]	
RCTB-A048	3/8 [9.53]	7/8 [22.23]	19 ¹⁵ / ₁₆ [506]	21 ¹ / ₈ [537]	17 ⁷ / ₁₆ [443]	1 ¹ / ₂ [38]	12 ¹ / ₃₂ [42]	14 ¹ / ₁₆ [357]	17 ⁷ / ₈ [454]	
RCTB-A060	3/8 [9.53]	7/8 [22.23]	23 ⁵ / ₈ [600]	21 ⁵ / ₁₆ [541]	17 ¹ / ₈ [435]	1 ³ / ₁₆ [30]	12 ¹ / ₃₂ [42]	20 ³ / ₈ [518]	15 ⁷ / ₁₆ [392]	
RCTB-B060	3/8 [9.53]	7/8 [22.23]	21 ⁵ / ₁₆ [541]	23 ⁵ / ₈ [600]	17 ¹ / ₈ [435]	1 ¹ / ₂ [38]	12 ¹ / ₃₂ [42]	15 ⁷ / ₁₆ [392]	20 ³ / ₈ [518]	
HIGH EFFICIENCY HEAT PUMP COILS WITH EXPANSION VALVE										
Indoor coils are equipped with a non-bleed type expansion valve and must be used with heat pump units equipped with hard start components.										
↓ For use with RRGB-/RPMA- outdoor heat pumps only.										
RCQB-B018	1/4 [6.35] ②	3/4 [19.05]	15 ¹⁵ / ₁₆ [405]	19 [483]	13 ⁷ / ₈ [352]	1 ¹ / ₂ [38]	12 ¹ / ₃₂ [42]	10 ¹ / ₁₆ [256]	15 ³ / ₄ [400]	
RCQB-B024	1/4 [6.35] ②	3/4 [19.05]	15 ¹⁵ / ₁₆ [405]	19 [483]	14 [356]	1 ¹ / ₂ [38]	12 ¹ / ₃₂ [42]	10 ¹ / ₁₆ [256]	15 ³ / ₄ [400]	
RCQB-B030	1/4 [6.35] ②	3/4 [19.05]	15 ¹⁵ / ₁₆ [405]	21 ¹ / ₈ [537]	15 [381]	1 ¹ / ₂ [38]	12 ¹ / ₃₂ [42]	10 ¹ / ₁₆ [256]	17 ⁷ / ₈ [454]	
RCQB-B036	3/8 [9.53]	3/4 [19.05]	15 ¹⁵ / ₁₆ [405]	21 ¹ / ₈ [537]	15 [381]	1 ¹ / ₂ [38]	12 ¹ / ₃₂ [42]	10 ¹ / ₁₆ [256]	17 ⁷ / ₈ [454]	
RCQB-B042	3/8 [9.53]	7/8 [22.23]	21 ⁵ / ₁₆ [541]	23 ⁵ / ₈ [600]	19 ⁵ / ₁₆ [491]	1 ¹ / ₂ [38]	12 ¹ / ₃₂ [42]	15 ⁷ / ₁₆ [392]	20 ³ / ₈ [518]	
RCQB-B048	3/8 [9.53]	7/8 [22.23]	21 ⁵ / ₁₆ [541]	23 ⁵ / ₈ [600]	23 ¹ / ₂ [597]	1 ¹ / ₂ [38]	12 ¹ / ₃₂ [42]	15 ⁷ / ₁₆ [392]	20 ³ / ₈ [518]	
RCQB-B060	3/8 [9.53]	7/8 [22.23]	21 ⁵ / ₁₆ [541]	23 ⁵ / ₈ [600]	23 ¹ / ₂ [597]	1 ¹ / ₂ [38]	12 ¹ / ₃₂ [42]	15 ⁷ / ₁₆ [392]	20 ³ / ₈ [518]	

① Line conn. (Stub Out) on coil.

② OR 3/8" [10 mm] O.D. sweat.

③ "F" & "G" dimensions are openings in drain pan base. (Not shown on coil assembly.)

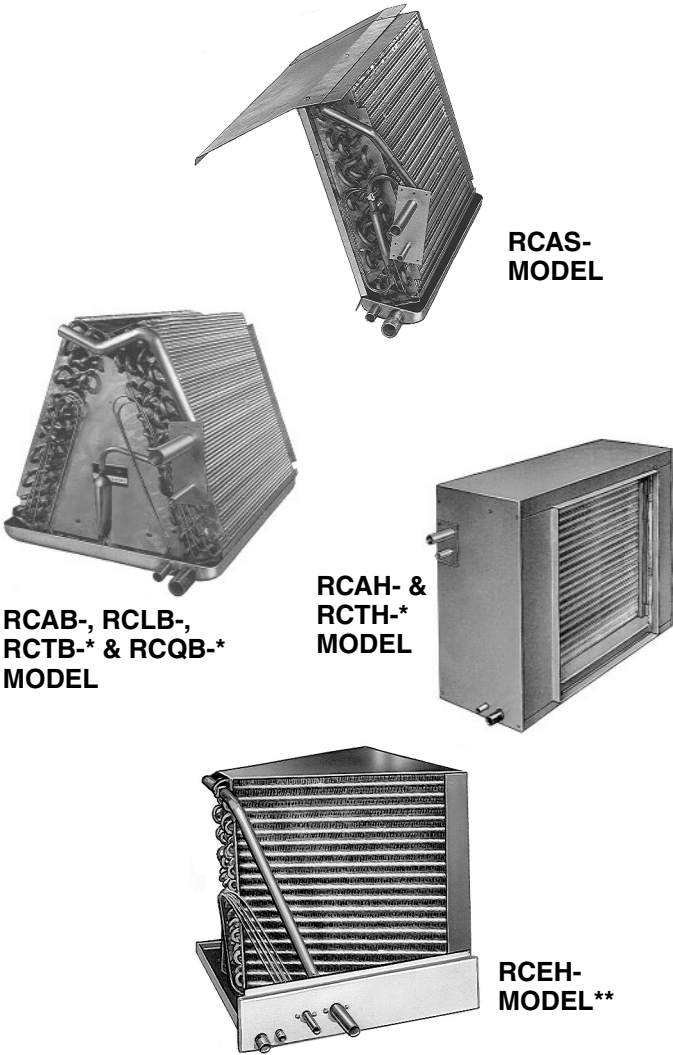
④ Required only when coil is used in plenum. Air stop provided with coil.

⑤ One air stop furnished with coil to fit 16¹/₄" [413 mm] plenum, REAB-10 furn. and RHQA-10 air handler. A field fab. air stop will be required for 22¹/₄" [565 mm] plenum. Air stop removed for 10¹/₄" [260 mm] plenum.

⑥ Air stop provided with 024 & 025 cooling coils with 19" [483 mm] long pans to fit plenum. Not required on RHQA- or REAB- units. (Also provided with 018 and 024 heat pump coils.)

Coils

Coil can be matched to products as listed in Coil Application table on page 3.



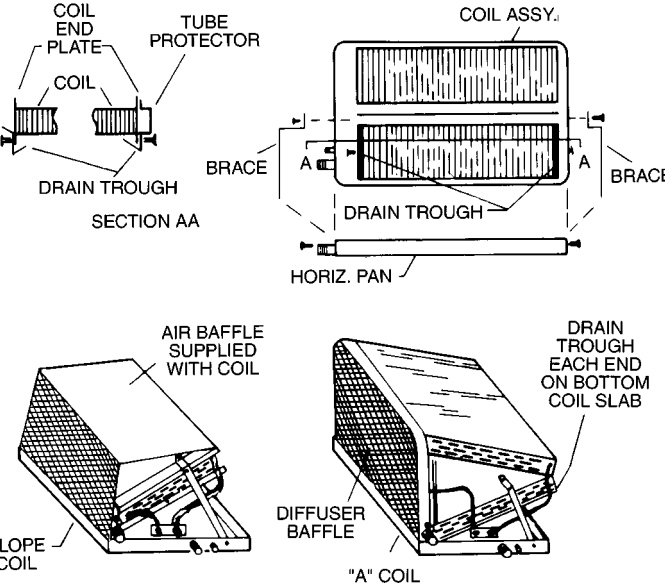
*TX valve not shown
**Can only be installed in position shown.

Horizontal Drain Pan Kit

Horizontal drain pan kits can be installed on coils shown for “A” series indoor heat pump section or “B” series electric furnaces for horizontal applications. Horizontal kits cannot be installed on coils for use in upflow-downflow coil plenums or on RCAB-model coils used in REAB-/REBB- series electric furnaces.

CAUTION—When coils are used with air handlers or furnaces and installed above a finished ceiling or living area, it is recommended that an auxiliary sheet metal condensate drain pan be fabricated and installed under entire unit.

Never locate the coil in return duct to a gas or oil furnace. Provide a service inlet to the coil for inspection and cleaning. Keep the coil pitched toward the drain connection.



Horizontal Drain Pan Extension Kit

HORIZONTAL DRAIN PAN KIT	EXTENSION KIT	ELECTRIC FURNACE
RXCH-A10	RXCH-A101	REAB-10
RXCH-A14	RXCH-A141	REAB-14
RXCH-A16	RXCH-A161	REAB-16
RXCH-A16	RXCH-A161	REAB-20

Coil Application

COIL MODEL NUMBER	REAB- SERIES ELEC. FURNACE SIZES (In.) [mm]				
	10 [254]	14 [356]	16 [406]	20 [508]	
RCEH-Z021 ①	①				Factory installed only in REBB-10. May be field installed in REAB-10.
RCEH-Z025 ①	①				
RCEH-Z031 ①		①			Factory installed only in REBB-14. May be field installed in REAB-14.
RCEH-Z037 ①		①			
RCEH-Z049 ①			①		Factory installed only in REBB-16. May be field installed in REAB-16.
RCEH-Z059 ①				①	Factory installed only in REBB-20. May be field installed in REAB-20.

① Horizontal application only. Electric furnace must be installed on left side, with air flow from right to left into the throat of the coil.

Dimensions: RCAH-/RCTH- Series

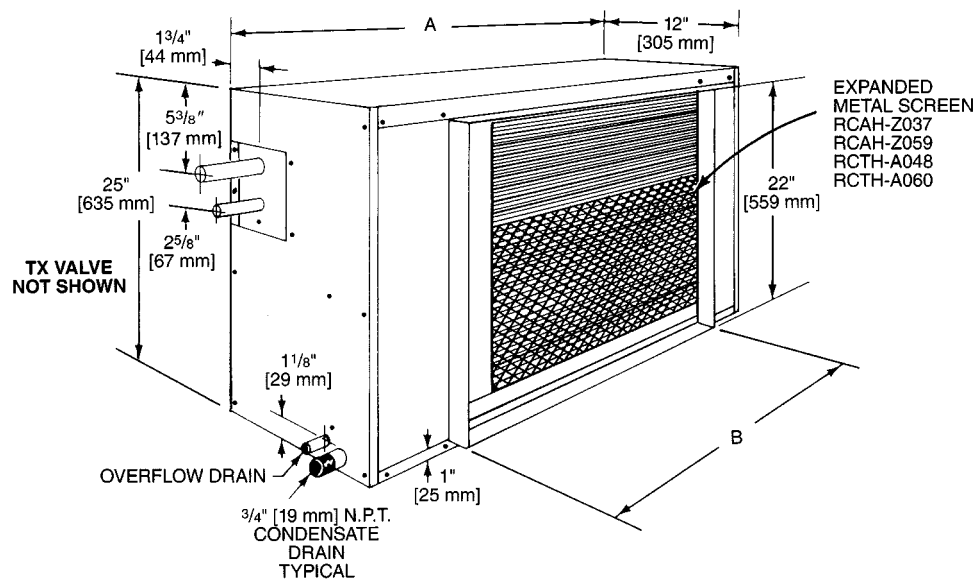
Coil Model Number		CFM [L/s] ②	A	B	Connecting Tubing O.D. (In.) [mm]	
					Suction	Liquid
					Sweat I.D. ③	Sweat I.D. ③
RCAH-Z025	RCTH-A024 ①	800 [377.6]	22 ¹ / ₈ [562]	19 ³ / ₄ [502]	5/8" [16]	1/4" [6] ④
		800 [377.6]	22 ¹ / ₈ [562]	19 ³ / ₄ [502]	3/4" [19]	3/8" [10]
RCAH-Z037	RCTH-A036 ①	1200 [566.3]	22 ¹ / ₈ [562]	19 ³ / ₄ [502]	3/4" [19]	1/4" [6] ④
		1200 [566.3]	26 ¹ / ₈ [664]	22 ¹ / ₄ [565]	3/4" [19]	3/8" [10]
RCAH-Z049	RCTH-A048 ①	1600 [755.1]	33 ⁷ / ₈ [860]	22 ¹ / ₄ [565]	3/4" [19]	3/8" [10]
		1600 [755.1]	33 ⁷ / ₈ [860]	22 ¹ / ₄ [565]	7/8" [22]	3/8" [10]
RCAH-Z059	RCTH-A060 ①	2000 [943.9]	33 ⁷ / ₈ [860]	22 ¹ / ₄ [565]	7/8" [22]	3/8" [10]

① Evaporator coils are equipped with a non-bleed type expansion valve and must be used with condensing units equipped with start components. Hard start kits are available through the parts department.

② Nominal air flow.

③ Line connections (stub out) on coil only—refer to installation instructions for refrigerant line size.

④ or 3/8" [10 mm] O.D. sweat.



Horizontal Flow Coil

Coil Model Number	Type Air Flow ①	Approx. Design Air Flow CFM [L/s] Range	Face Area Sq. Ft. [m²]	Fins-in. Rows Deep	Shipping Wt., lbs. [kg]	Static Pressure Drop Through Wet Cooling Coil [kPa] (Inches H ₂ O) CFM [L/s]															
						600 [285]	700 [330]	800 [380]	900 [425]	1000 [470]	1100 [519]	1200 [565]	1300 [614]	1400 [660]	1500 [708]	1600 [755]	1700 [802]	1800 [850]	1900 [897]	2000 [945]	2100 [991]
STANDARD HORIZONTAL COOLING COILS																					
RCAH-Z025	H	675/1000 [319/470]	3.04 [0.28]	12/3	33 [15]	.06 [.015]	.08 [.020]	.10 [.025]	.13 [.032]	.15 [.037]	.18 [.045]										
RCAH-Z037	H	1050/1250 [496/590]	3.04 [0.28]	10/4	39 [17.7]					.23 [.057]	.26 [.065]	.30 [.075]	.34 [.085]								
RCAH-Z049	H	1400/1800 [660/850]	5.00 [0.46]	12/3	48 [21.8]									.15 [.037]	.17 [.042]	.19 [.047]	.21 [.052]	.23 [.057]	.25 [.062]	.27 [.067]	
RCAH-Z059	H	2000 [945]	5.00 [0.46]	10/4	57 [25.8]												.24 [.060]	.26 [.065]	.28 [.070]	.30 [.075]	.32 [.080]
RCTH-A024	H	625/1000 [295/470]	3.04 [0.28]	14/4	34 [15.4] ②	.12 [.030]	.16 [.040]	.20 [.050]	.24 [.060]	.27 [.067]											
RCTH-A036	H	1000/1200 [470/565]	3.60 [0.33]	14/4	41 [18.5] ②				.13 [.032]	.16 [.040]	.18 [.045]	.21 [.052]	.23 [.057]	.26 [.065]							
RCTH-A048	H	1400/1800 [660/850]	5.00 [0.46]	12/4	53 [24] ②									.16 [.040]	.18 [.045]	.19 [.047]	.20 [.050]	.21 [.052]	.23 [.057]	.24 [.060]	
RCTH-A060	H	1900 [897]	5.00 [0.46]	13/4	55 [24.9] ②												.22 [.055]	.24 [.060]	.27 [.067]	.29 [.072]	.31 [.077]

① H = Horizontal air flow.

② Coil weight only.

Before proceeding with installation, refer to installation instructions packaged with each model, as well as complying with all Federal, State, Provincial, and Local codes, regulations, and practices.

**RHEEM
AIR CONDITIONING
DIVISION**

P.O. Box 17010, Fort Smith, Arkansas 72917-7010



"In keeping with its policy of continuous progress and product improvement, Rheem reserves the right to make changes without notice."