

PRINTING INSTRUCTIONS: MAKE EXACTLY 8.000 IN X 10.000 IN. WHITE BACKGROUND WITH BLACK PRINTING.

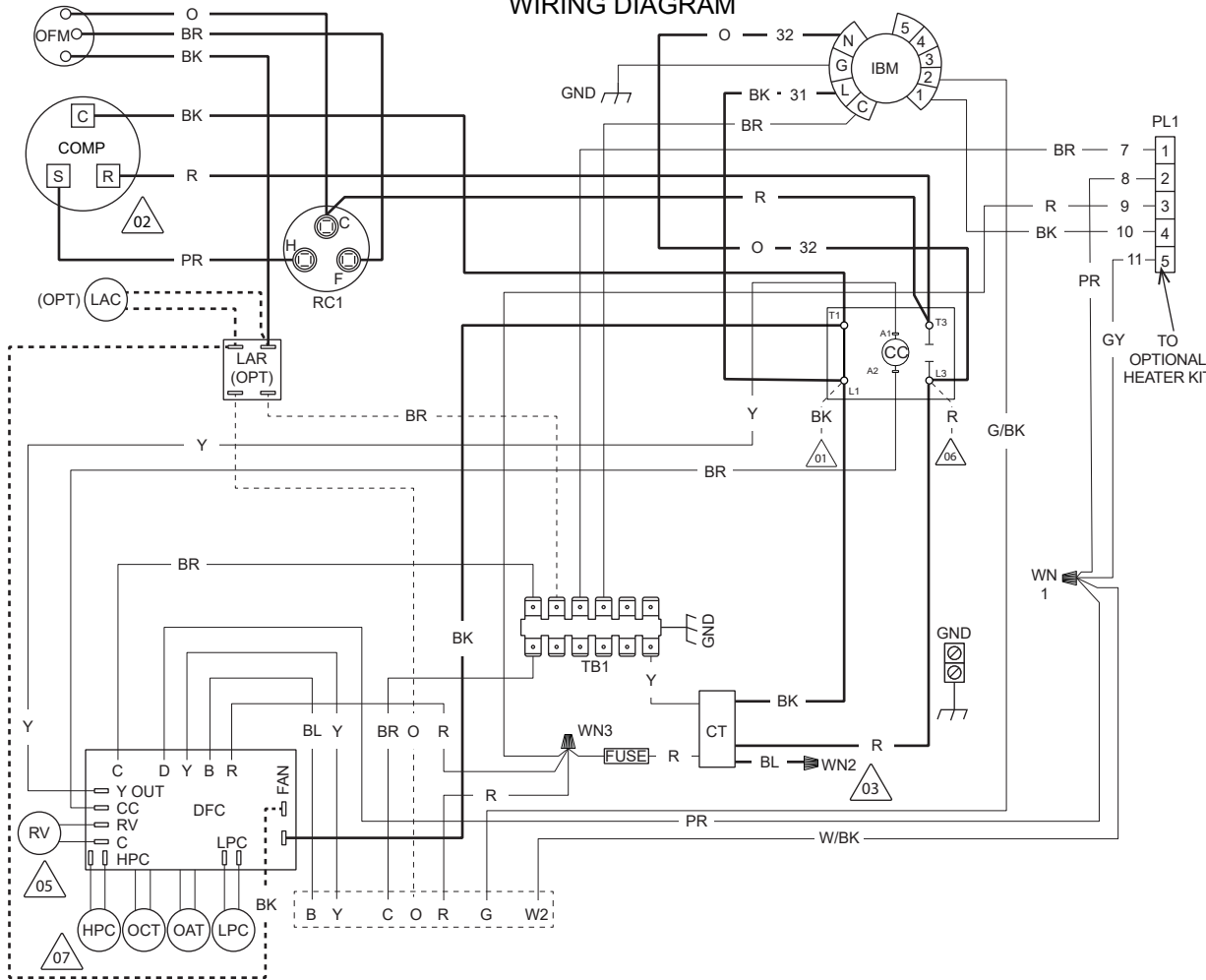
MATERIAL:ADS-4574-02, PRESSURE SENSITIVE, ADHESIVE BACKED MATERIAL.

REVISIONS

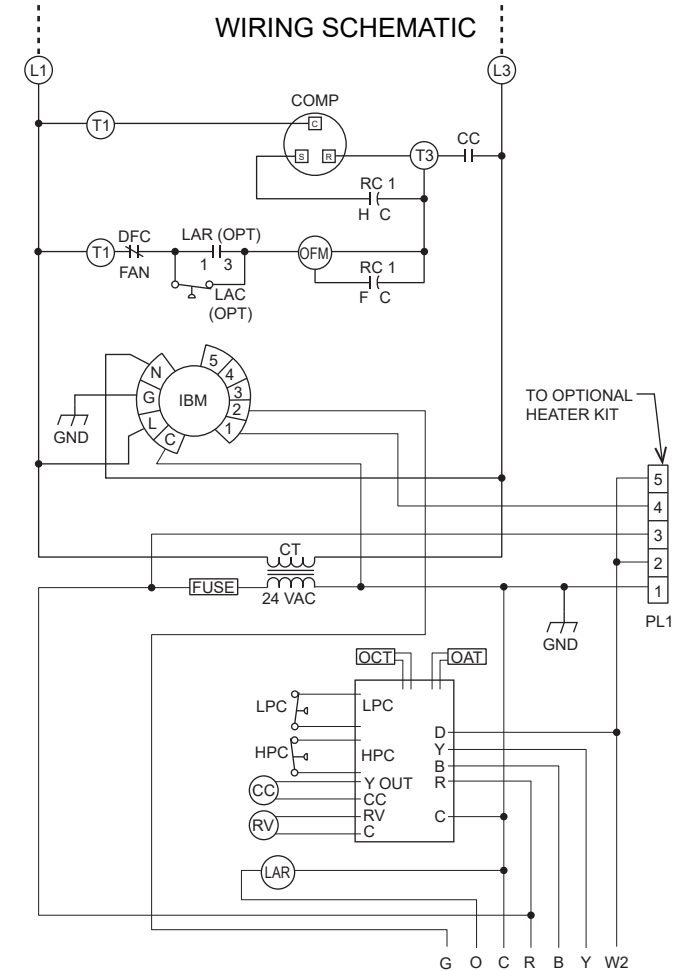
NO REVISION TO DESIGN, MATERIAL, TOOLING, OR PROCESS IS ACCEPTABLE WITHOUT PRIOR APPROVAL FROM RHEEM THROUGH AN AUTHORIZED CHANGE NOTICE. A REVISED ENGINEERING SPECIFICATION AND A RESAMPLING OF PARTS. THE SUPPLIER IS RESPONSIBLE FOR NOTIFYING RHEEM R & D AND PURCHASING DEPARTMENTS IN WRITING OF ANY CHANGES AFFECTING PRODUCT QUALITY, PERFORMANCE, RELIABILITY, PACKAGING, DELIVERY OR WORKMANSHIP. *ANY DOCUMENTS REFERRED TO ON THIS DRAWING ARE INCLUDED IN THE SPECIFICATIONS FOR THIS COMPONENT*.

NOTE: THE DOTTED BOX NEAR THE DRAWING NUMBER REPRESENTS A .25 X .25 2D DATA MATRIX. SEE ADS-104669-01 FOR DATA MATRIX SPECS.

WIRING DIAGRAM



WIRING SCHEMATIC



WIRING INFORMATION

LINE VOLTAGE
 -FACTORY STANDARD _____
 -FACTORY OPTION - - - - -
 -FIELD INSTALLED - - - - -

LOW VOLTAGE
 -FACTORY STANDARD _____
 -FACTORY OPTION - - - - -
 -FIELD INSTALLED - - - - -

REPLACEMENT WIRE
 -MUST BE THE SAME SIZE AND TYPE OF INSULATION AS ORIGINAL (105C, MIN.)

WARNING
 -CABINET MUST BE PERMANENTLY GROUNDED AND CONFORM TO I.E.C., N.E.C., C.E.C., NATIONAL WIRING REGULATIONS, AND LOCAL CODES AS APPLICABLE.

NOTES

- CONNECTORS SUITABLE FOR USE WITH COPPER CONDUCTORS ONLY.
- COMPRESSOR MOTOR THERMALLY PROTECTED.
- TRANSFORMER FACTORY WIRED FOR 230 VOLTS. USE RED AND BLUE LEADS FOR 208 VOLTS.
- MOTOR FACTORY WIRED FOR LOW SPEED. SEE AIRFLOW TABLE IN INSTALLATION INSTRUCTIONS TO DETERMINE CORRECT SPEED FOR UNIT APPLICATION.
- THIS COMPONENT ENERGIZED IN HEATING.
- FIELD WIRING OR CONNECTION FROM HEATER KIT FUSE BLOCK.
- HPC TERMINALS ON DFC ARE JUMPERED IF HPC IS NOT PRESENT.
- TAP 5 AVAILABLE FOR HIGH STATIC CONDITIONS.

COMPONENT CODES

ALC	AUX. LIMIT CONTROL	LAR	LOW AMBIENT RELAY
BR	BLOWER RELAY	LPC	LOW PRESSURE CONTROL
CC	COMPRESSOR CONTACTOR	OAT	OUTDOOR AMBIENT TEMP
CCH	CRANKCASE HEATER	OCT	OUTDOOR COIL TEMP
COMP	COMPRESSOR	OFM	OUTDOOR FAN MOTOR
CT	CONTROL TRANSFORMER	OPT	OPTIONAL
DFC	DEFROST CONTROL	PL	PLUG
DS	DEFROST SENSOR	RC	RUN CAPACITOR
GND	GROUND	RV	REVERSING VALVE
HGS	HOT GAS SENSOR	SOL	SOLENOID
HPC	HIGH PRESSURE CONTROL	TB	TERMINAL BLOCK
IBM	INDOOR BLOWER MOTOR	TDC	TIME DELAY CONTROL
LAC	LOW AMBIENT COOLING CONTROL	⚡	WIRE NUT

WIRE COLOR CODE

BK.....BLACK	G.....GREEN	PR.....PURPLE
BR.....BROWN	GY.....GRAY	R.....RED
BL.....BLUE	O.....ORANGE	W.....WHITE
		Y.....YELLOW

ELECTRICAL WIRING DIAGRAM

2-4 TON SINGLE STAGE PACKAGE HEAT PUMP

1 PH, 208/230 VOLT - 60 HZ

APPROVED:	CHECKED:	ORIGINAL RELEASE NO.:
MODELED BY: VYM	DATE: 11/18/2022	108667
PART NO.:	90-23621-43	REV: 00